



# The Open Ecology Journal

Content list available at: [www.benthamopen.com/TOECOLJ/](http://www.benthamopen.com/TOECOLJ/)

DOI: 10.2174/1874213001811010025



## RESEARCH ARTICLE

# Skin Spotting Variation Associated with Biometric and Reproductive Parameters in Naturalized Populations of Rainbow Trout, *Oncorhynchus mykiss*, from Southern Chile

Nelson Colihueque<sup>1,\*</sup>, Francisco Javier Estay<sup>2</sup> and Miguel Yáñez<sup>3</sup><sup>1</sup>Departamento de Ciencias Biológicas y Biodiversidad, Universidad de Los Lagos, Osorno, Chile<sup>2</sup>Piscícola Huililco Ltda., Pucón, Chile<sup>3</sup>Departamento de Estadística, Universidad del Bío-Bío, Concepción, Chile

Received: November 13, 2017

Revised: February 08, 2018

Accepted: February 08, 2018

### Abstract:

#### Background:

Skin pigmentation in fish is involved in various biological processes. In salmonids, the interactions of skin spottiness with biometric and reproductive parameters are mostly unknown, especially in naturalized populations influenced by different ecological factors.

#### Objective:

To associate skin spottiness variation with biometric and reproductive parameters in broodstocks of naturalized rainbow trout populations from southern Chile.

#### Method:

The number of dark spots below the lateral line was assessed in male and female broodstocks of rainbow trout from two reproductive seasons, years 2007 and 2012, and then this dataset was associated with biometric and reproductive parameters of the same individuals, using multivariate data analysis in the form of stepwise forward multiple regression.

#### Results:

Male body weight from year 2007 had a significant negative influence on the number of dark spots below the lateral line ( $P < 0.01$ ), while the reproductive variables egg diameter and spawning time of females from years 2007 and 2012, respectively, had a significant positive influence on this parameter ( $P < 0.01$ ).

#### Conclusion:

Our results indicate that there are male biometric parameters with a significant negative influence on skin spottiness. Our data also reveal that some reproductive parameters have a positive influence on skin spottiness. The identification of these reproductive parameters related to spottiness variation would reflect the reproductive quality of female broodstocks living in natural environments.

**Keywords:** Rainbow trout, Naturalized population, Skin spottiness, Biometry, Reproduction, Multiple regression.

## 1. INTRODUCTION

Several studies have shown that skin pigmentation in vertebrates is a relevant character affecting different biological processes, such as the ornamentation of individuals, female mating preferences and the reproductive success of breeders

\* Address correspondence to this author at the Departamento de Ciencias Biológicas y Biodiversidad, Universidad de Los Lagos, Av. Alcalde Fuchslocher 1305, Casilla 933, Osorno, Chile; Tel: 56-64-2333131; Fax: 56-64-2333455; E-mail: [ncolih@ulagos.cl](mailto:ncolih@ulagos.cl)

in terms of offspring quality (Nordeide *et al.* 2013). In fishes, for example, its significance has been well documented in relation to the issue of sexual selection, as occurs in wild-type guppy males. In these fish, the male color pattern can determine the female mating preferences, since this character enhances the attractiveness of males during courtship (Kodric-Brown 1985, Houde and Endler 1990, Evans *et al.* 2004, Sathyan *et al.* 2013). In salmonids, a group that presents a characteristic species-specific pigmentation pattern (Colihueque 2010), studies have established that this character has a close relationship with developmental, reproductive and physiological processes. For example, some studies found that skin color intensity (*i.e.*, redness) and body color are associated with offspring quality (Janhunen *et al.* 2011, Ramstad *et al.* 2010), and that the silver skin color is related to the smoltification capacity of different strains (Nichols *et al.* 2008). In addition, it has been reported that, in some species of this group, other skin pigmentation components, particularly the spotting variation, could be related with fish size (Aparicio *et al.* 2005) and with the different environmental features of the rivers inhabited by these populations. In the latter case, reflecting the role of skin pigmentation as a signal status that could determine the spatial arrangement of individuals along the river bed (Penteriani *et al.* 2015). Further studies have indicated that spotting variation in salmonids can be involved in behavior-related roles, such as stress responsiveness, given that highly spotted individuals are generally more resistant to stress than less spotted fishes (Kittilsen *et al.* 2009). Taken together, these data provide strong evidence that skin pigmentation in salmonids plays an important role in different biological processes and may provide clues to facilitate the analysis of these events.

The spottiness is a characteristic attribute of the skin pigmentation of rainbow trout, *Oncorhynchus mykiss* (Walbaum, 1792). In adult individuals of this species, this character is made up of conspicuous small dark spots, mainly distributed on the flank (above and below the lateral line), on the back, including the operculum and the dorsal and caudal fins (Ade 1989). The available evidence indicates that the spottiness is not a constant character in rainbow trout, given that it may vary within and between populations, *e.g.*, in number both below the lateral line (Islam *et al.* 1973, Tack 1973) and on the back (Colihueque *et al.* 2011, 2014), or in size on the flanks (Kause *et al.* 2003). Thus, it is possible to find trouts within the same stock with a wide variation in the number of dark spots. For example, on the back, which may result in individuals with scarce or no spotting ( $< 0.5$  spots/cm<sup>2</sup>), in contrast to others that can present a highly spotted skin ( $> 5.5$  spots/cm<sup>2</sup>) (Colihueque *et al.* 2011). To date, the origin of this variation in the rainbow trout is unclear, however, it has been reported that the number of dark spots may vary in function of fish size and spawning time for the spottiness below the lateral line (Islam *et al.* 1973), and with age for the spottiness on back (Colihueque *et al.* 2011). In this species additional evidences also support the possible effects of genetic factors on the variation of the number of dark spots, either below the lateral line (Islam *et al.* 1973, Tack 1973) or on the back (Díaz *et al.* 2011). Most studies known to date on the analysis of the variation of the number of dark spots in rainbow trout have been carried out in cultured populations (Islam *et al.* 1973, Tack 1973, Colihueque *et al.* 2011, 2014), being their occurrence in natural or naturalized population of this species largely unknown. In natural populations of salmonid fishes, the evidence indicates a variation of this character is associated with biometric and environmental factors. For example, in brown trout the number of dark spots distributed below the lateral line is positively associated with fish size (Aparicio *et al.* 2005) and in graylings, the spotting level on flank presents a clear interaction with different environmental features of the river that they inhabit (Penteriani *et al.* 2015).

The rainbow trout was introduced to our country in 1905 (Golusda 1927). Currently, several naturalized populations of this species are found from northern to southern Chile inhabiting different river and lakes. In this body of waters, the rainbow trout has importance for recreational fishing purposes. The naturalized populations of rainbow trout inhabiting lakes from southern Chile, called Araucanian lakes, are adapted to particular limnic conditions given that these body waters present special environmental characteristics, such as a) glacial origin with volcanic influence in the soils, b) high deepness, c) thermal stratification, d) high in water transparency, and e) oligotrophic with very low salt/nutrient concentrations (Campos 1984, Arismendi *et al.* 2011). In addition, within these lakes, the naturalized populations of rainbow trout coexist with several native fishes and other introduced salmonids, most of them occupying the same habitat (Soto *et al.* 2006). Although some studies on the biology of naturalized populations of Araucanian lakes have been reported, such as those referring to the characterization of reproductive parameters and reproductive cycle (Wetzlar 1979, Soto *et al.* 2002), there have been no previous studies on their skin pigmentation. These populations provide an ideal opportunity to examine the relationship, for example, between the spottiness and reproductive parameters in nature to identify the factors that may contribute to spotting deviation. The spotting variation could be due to several factors, some of them being the heterozygosis of genes that control the trait, the interaction of individuals with different environmental features, the existence of different ecological pressures, sexual selection, and their correlation with behavioural and physiological traits, or a combination of the above. To assess whether the spotting

level on the skin is associated with biometric and reproductive parameters of rainbow trout populations in nature, we investigated the relationship between the number of dark spots below the lateral line with different biometric and reproductive parameters in breeders of this species collected from a naturalized population.

This paper presents the result of the relationship assessed by stepwise multiple regression analyses between the number of dark spots below the lateral line with biometric and reproductive parameters by analysing male and female breeders from a naturalized population of rainbow trout that inhabit a lake from southern Chile. We analyzed breeders from two reproductive seasons to obtain a more complete view of the possible trends that could emerge among these parameters in nature.

## 2. MATERIALS AND METHODS

### 2.1. Fish Collection and Spawning

Sexually mature specimens were collected from different inlet streams of Calafquén Lake (39°31'S; 72°10'W, Villarrica district, La Araucanía Region, Chile), when the trouts carried out their reproductive run occurred from October to November, during the spawning season of the years 2007 and 2012. Next, they were reared at Chiguaico fish hatchery (Lican Ray City, Villarrica district) at a temperature that ranged from 7 to 8 °C with a constant flow of water at 10 L/s and a culture density of 15 kg/m<sup>3</sup> in a raceway-type pond. The collected female and male specimens were measured for body weight (BW) and total length (TL) to the nearest 5 g and 0.1 cm, respectively. The condition factor (CF) according to the following formula was also calculated:

$$CF = (BW/TL^3) \cdot 100$$

Means and ranges of biometric parameters BW, TL and CF of collected specimens are presented in Table 1. Ripe females were spawned individually and before handling they were anesthetized with a solution of benzocaine at 100 mg/L. Next, eggs were fertilized by a pool of diluted milt in Billard's activator (Billard 1992) from four to six males. Fertilized eggs from individual females were incubated separately in plastic baskets within a shallow-trough incubator. Data was recorded for the following parameters: 1) Fertilization rate (FR) (%), 2) egg diameter (ED) (mm), 3) total fecundity (TF) (eggs/female), 4) relative fecundity (RF) (eggs/kg female), 5) eyed egg survival (ES) (%), and 6) spawning time (SPT) (number of days elapsed from the first day of the year until the spawning date of female). Means and ranges of the reproductive parameters FR, ED, TF, RF, ES and SPT of collecting females are shown in Table 2. Females and males were also photographed with a digital camera to register the number of dark spots on the skin. Once breeders were used in the reproductive process, all were returned live to the Calafquén Lake. Percentage data of FR and ES variables were arcsine-transformed prior to the analysis to better conform the assumption of normality. Rainbow trout specimens analysed in this study were captured during a restocking program of Calafquén Lake carried out from 2006 to 2012, since this lake had suffered a major decline in its population of rainbow trout, due to overfishing and poaching. To comply with the regulations of the Chilean fishing law, repopulation is performed from fingerlings produced by the breeding stock of the same basin. These broodstocks are captured during their spawning migration between the lake and the tributary streams. Calafquén Lake is representative of the rainbow trout population of the Araucanian lakes, since the introduction of rainbow trout was carried out in all of them from the same state hatcheries in the past.

**Table 1. Mean ( $\pm$  1 SD), sample size (N) and range (in parenthesis) of biometric parameters registered for male and female breeders of naturalized rainbow trout population from southern Chile.**

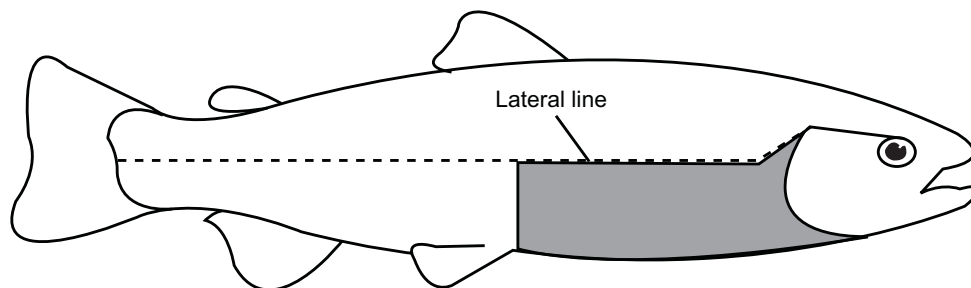
Parameter	Year 2007		Year 2012	
	Females (N = 34)	Males (N = 17)	Females (N = 41)	Males (N = 24)
Body weight (g)	1794.7 $\pm$ 608.7 (845–3150)	1074.1 $\pm$ 537.4 (495–2370)	2076.7 $\pm$ 604.5 (658–3644)	1532.6 $\pm$ 871.0 (424–4088)
Total length (cm)	51.5 $\pm$ 5.9 (40.5–63.1)	45.0 $\pm$ 7.6 (36.9–64.5)	54.5 $\pm$ 5.8 (37–65.5)	49.4 $\pm$ 8.4 (33.5–67.0)
Condition factor (CF)	1.3 $\pm$ 0.2 (1–2.1)	1.1 $\pm$ 0.1 (0.9–1.3)	1.3 $\pm$ 0.1 (0.7–1.5)	1.2 $\pm$ 0.1 (1.0–1.5)

**Table 2.** Mean ( $\pm$  1 SD), sample size (N) and range (in parenthesis) of reproductive parameters registered for female breeders of naturalized rainbow trout population from southern Chile.

Parameter	Year 2007 (N = 34)	Year 2012 (N = 41)
Fertilization rate (%)	93.3 $\pm$ 11.2 (50–100)	89.5 $\pm$ 9.2 (70–100)
Egg diameter (mm)	5.4 $\pm$ 0.3 (4.7–6.1)	5.3 $\pm$ 0.3 (4.5–6.1)
Total fecundity (eggs/female)	2934 $\pm$ 889.9 (1102–4930)	3456 $\pm$ 1298.1 (1332–7096)
Relative fecundity (eggs/kg female)	1735.6 $\pm$ 539.4 (918.7–2930.9)	1726.0 $\pm$ 568.9 (568.9–638.0)
Eyed egg survival (%)	84.3 $\pm$ 16.3 (36.8–97.8)	87.6 $\pm$ 10.9 (60.5–99.4)
Spawning time (days)	300.2 $\pm$ 14.5 (278–330)	286.5 $\pm$ 7.6 (274–302)

## 2.2. Spotting Analysis

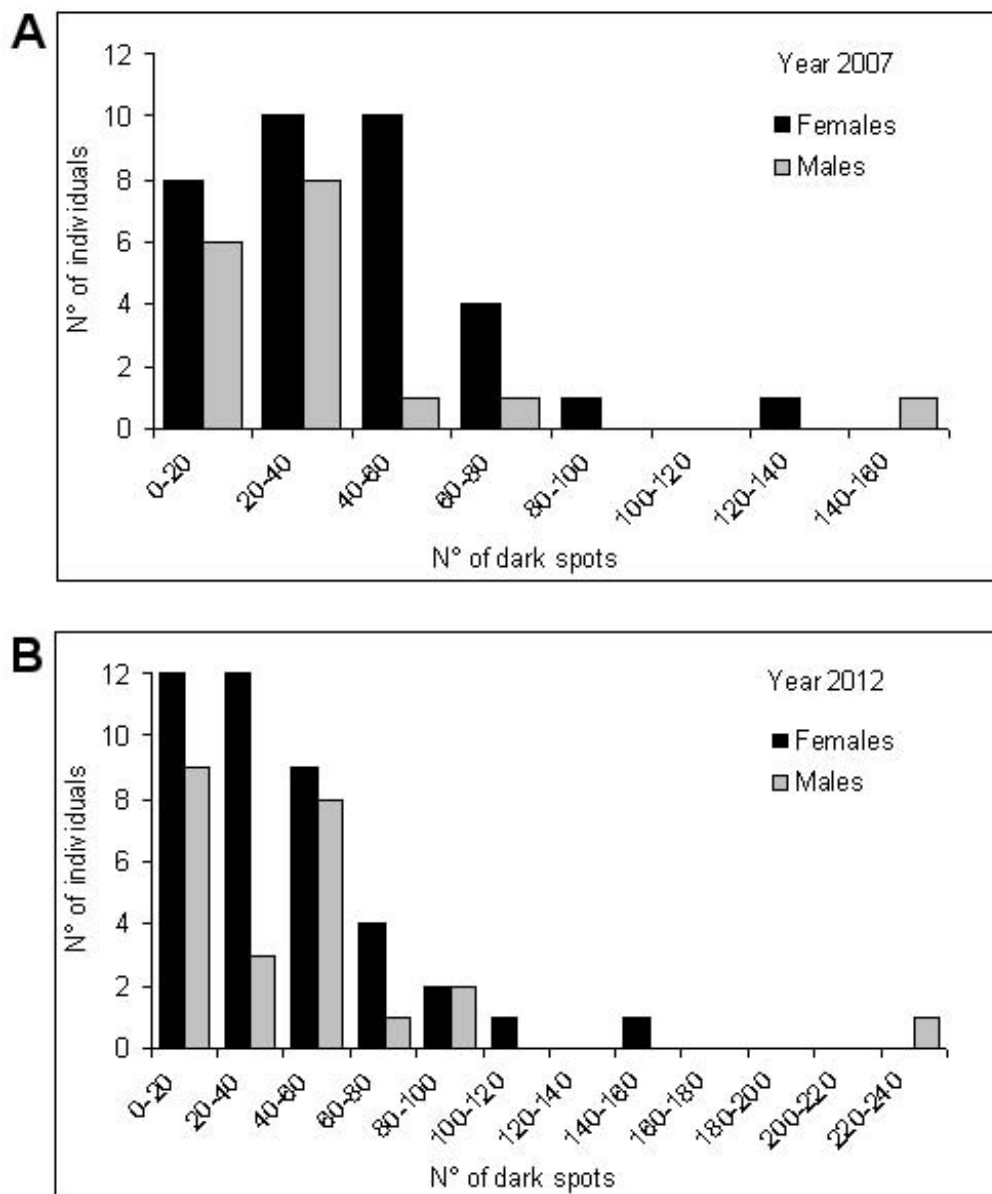
To perform the analysis of spottiness, the number of dark spots below the lateral line (NS-BLL) were counted in the area B of the body according to Qadri *et al.* (1959). This area corresponds to a rectangular zone of the skin located below the lateral line, in the posterior tip of the operculum and in the front base of the pelvic fin (Fig. 1). We selected this area given that it exhibits a high variation in number of dark spots on the skin in rainbow trout compared with others anteroposterior zones of this species according to previous studies (Islam *et al.* 1973). The NS-BLL were counted from digital photographs from the right side of the specimen. Only dark spots visible at naked eye were counted. Size and shape of the spots were not considered and fused spots were counted as one. The NS-BLL was log-transformed to achieve normality.

**Fig. (1).** The body area below the lateral line (highlighted in gray) selected for the analysis of the number of dark spots in rainbow trout.

## 2.3. Statistical Analysis

The normality of variables was determined by the Kolmogorov-Smirnov (K-S) test. Differences between mean of numbers of dark spots were calculated with a two-way analysis of variance (2-way ANOVA) followed by Tukey's multiple comparison tests to carry out post hoc pairwise comparisons of means (Sokal and Rohlf 1995). Forward selection stepwise multiple regression analyses were performed on NS-BLL with biometric (BW, TL and CF) and reproductive (FR, ED, TF, RF, ES and SPT) variables, as potential predictors to identify which variable, or combinations of variables, was most highly correlated with, and therefore possibly causally linked to, NS-BLL. Stepwise multiple regression is a useful tool for identifying combinations of independent variables that explain the most variation in another dependent variable (Sokal and Rohlf 1995). The criteria used for variable selection during forward stepwise regression were an  $F$ -statistic above 3.84 as entrance condition and an  $F$ -value of 2.71 as an exit criterion. The residuals of the final models were explored to verify the assumptions of normality, homogeneity and linearity. The absence of multicollinearity between independent variables was also verified through the variation inflation factor (VIF), based on the tolerance value of each variable, according to the formula  $VIF = 1/\text{tolerance}$ . When the value of the





**Fig. (3).** Distribution of the number of dark spots below the lateral line in breeders of a naturalized rainbow trout population from southern Chile. **(A)** Males and females breeders of the spawning season from year the 2007, **(B)** males and females breeders of the spawning season from the year 2012.

Stepwise multiple regression for biometric parameters revealed a significant relationship, ranging from medium to large effects, in broodstocks during year 2007. Thus, results indicated a statistically significant relationship, and medium to large effects, between NS-BLL and BW for males ( $P < 0.01$ ,  $d = 1.71$ ) and NS-BLL and TL for females ( $P < 0.05$ ,  $d = 0.73$ ) (Table 4). BW in males presented a medium negative correlation with NS-BLL ( $\beta = -0.6496$ ), while TL in females showed a weak positive association with NS-BLL ( $\beta = 0.3434$ ).  $R^2$  indicated that the model explained 42.1% and 11.7% of the variability in the NS-BLL of males and females, respectively (Table 5). Bootstrap correction of  $P$ -values of Spearman correlation showed that only the relationship between NS-BLL and BW for males ( $r_s = -0.5166$ ,  $P = 0.0337$ ,  $P_{\text{BOOTS}} = 0.0371$ ) was significant at  $P < 0.05$ . Thus, BW in males had the greatest influence on the response variable NS-BLL. For males 2012 no significant correlations were registered between NS-BLL and any biometric parameters ( $P > 0.05$ ). In the case of BW a negative correlation was found ( $\beta = -0.2794$ ), but without significance (exact  $P$ -value = 0.1860). Stepwise multiple regression for reproductive parameters revealed a significant relationship for females during the years 2007 and 2012 (Table 4). This analysis indicated the selection of only one of the six

independent variables tested in the model, which had a significant association, and large effects, with NS-BLL that corresponded to ED for females in year 2007 ( $P < 0.01$ ,  $d = 1.0$ ) and SPT for females in year 2012 ( $P < 0.01$ ,  $d = 0.96$ ). In both cases, the correlations were positives and medium between the response variable and the independent variable ( $\beta = 0.4487$  and  $\beta = 0.4309$ , respectively).  $R^2$  indicated that 20.1% and 18.5% of variations in the response variable NS-BLL occurred because of changes in the independent variables ED and SPT, respectively (Table 5). Bootstrap correction of  $P$ -values of Spearman correlation showed that the relationships between NS-BLL and ED for females year 2007 ( $r_s = 0.5328$ ,  $P = 0.0011$ ,  $P_{\text{BOOTS}} = 0.0021$ ), and NS-BLL and SPT for females year 2012 ( $r_s = 0.4166$ ,  $P = 0.0067$ ,  $P_{\text{BOOTS}} = 0.0113$ ) were significant at  $P < 0.05$ . This result indicates that ED and SPT are important factors in the response variable NS-BLL. The equations of the fitted models were

Females year 2007:

$$\text{NS-BLL} = -0.9010 + 0.4461 \times \text{ED}$$

Females year 2012:

$$\text{NS-BLL} = -3.8494 + 0.0186 \times \text{SPT}$$

**Table 4. Final stepwise multiple regression models. Models show the effect of the biometric and reproductive variables on the number of dark spots below the lateral line in male and female broodstocks of a naturalized population of rainbow trout from southern Chile. SE = standard error of the estimate,  $\beta$  = regression coefficient,  $P$  = p-value with exact p-value indicated in parenthesis.**

Parameters/Groups	Model	Coefficients	SE	$\beta$	t-value	$P$
<b>Biometric parameters</b>						
Males year 2007	Constant	1.9875	0.2075		9.5779	< 0.001 (0.0000)
	Body weight	-0.0006	0.0002	-0.6496	-3.3088	< 0.01 (0.0048)
Females year 2007	Constant	0.6014	0.4458		1.3492	> 0.05 (0.1868)
	Total length	0.0178	0.0086	0.3434	2.0681	< 0.05 (0.0468)
<b>Reproductive parameters</b>						
Females year 2007	Constant	-0.9010	0.8529		-1.0564	> 0.05 (0.2987)
	Egg diameter	0.4461	0.1571	0.4487	2.8400	< 0.01 (0.0078)
Females year 2012	Constant	-3.8494	1.7923		-2.1478	< 0.05 (0.0380)
	Spawning time	0.0186	0.0063	0.4309	2.9821	< 0.01 (0.0049)

**Table 5. Model summary of the stepwise multiple regression.  $R$  = coefficient of multiple correlation,  $R^2$  = coefficient of multiple determination, SE = standard error of the estimate,  $P$  = p-value with exact p-value indicated in parenthesis.**

Parameters/Groups	$R$	$R^2$	Adjusted $R^2$	SE	$F$	$P$
<b>Biometric parameters</b>						
Males year 2007	0.6496	0.4219	0.3834	0.3736	$F_{1/15} = 10.948$	< 0.01 (0.0048)
Females year 2007	0.3434	0.1179	0.0903	0.2938	$F_{1/32} = 4.2772$	< 0.05 (0.0468)
<b>Reproductive parameters</b>						
Females year 2007	0.4487	0.2013	0.1764	0.2796	$F_{1/32} = 8.0656$	< 0.01 (0.0078)
Females year 2012	0.4309	0.1857	0.1648	0.3005	$F_{1/39} = 8.8930$	< 0.01 (0.0049)

#### 4. DISCUSSION

Skin pigmentation in fishes has been related to biological and environmental parameters to try to understand if the variation of this character, either within or among populations, has a biological significance. To date these studies have been able to clarify the participation of this phenotype in several processes, for example, in predation avoidance (Endler 1980), in female mating preferences (Kodric-Brown 1985, Houde and Endler 1990, Evans *et al.* 2004), in phenotypic plasticity that may facilitate invasions in nature (Westley *et al.* 2013), in cryptic camouflage (Donnelly and Dill 1984, Donnelly and Whoriskey 1993), in status signals related to the spatial arrangement of individuals along the river bed (Penteriani *et al.* 2015), and, also, in stress response of individuals (Kittilsen *et al.* 2009). In spite of this progress, few studies have been conducted on the role of skin pigmentation in relation to the reproductive success of broodstocks, although the scarce data available on this issue suggest its possible role in spawning displays and reproductive success (Wedekind *et al.* 2008, Janhunen *et al.* 2011). This study contributes to understanding the influence of skin pigmentation, particularly skin spottiness, on reproductive and biometric patterns observed in two naturalized populations of rainbow trout. Through this analysis, we provide new data on the possible trends that could emerge among these parameters in nature, in which particular intrapopulation interactions may have taken place in response to different ecological factors.

In this study, we support that below the lateral line (area B) the number of dark spots is also a variable character in naturalized populations of this species from southern Chile. Thus, for example in the 2007 stock, this parameter varied from 4 to 142 and from 5 to 230 dark spots in females and males, respectively. As far as we know, to date no data on naturalized population from Chile and other countries has been published on this character to compare our results. However, taken into account the data available for the cultured population of this species, our results have a good concordance. Indeed, Islam *et al.* (1973) reported hatchery populations from Japan with a number of dark spots in the area B ranging either from 6 to 338, or from 12 to 316. In addition, our data also agree with reports from the other cultured population, as is the case of a German population where this character varied from 0 to 250 (Tack 1973). In summary, our data along with previous studies indicate that the number of dark spots below the lateral line of the rainbow trout is mostly a polymorphic character, a phenomena that are displayed by cultured and naturalized populations of this species.

The variation in the number of dark spots in the naturalized population of rainbow trout studied here is an interesting result that will require more in depth investigation to clarify their origin. However, this variation appears to be not sex-linked given that males and females analyzed in this work from both reproductive periods did not present significant differences in this parameter. Other factors, mostly studied in cultured populations of this species, although not analyzed in this work, may involve the effect of genetic, environmental and even, behavioural factors. For instance, the strain-specific variation in the number of dark spots below the lateral line (Islam *et al.* 1973), and the transmission of this character to the offspring in experimental crosses of progenitors with contrasting number of dark spots (Tack 1973), represent findings that support the effect of genetic factors in rainbow trout. In line with these evidences, more recent data obtained in this species also indicate the effect of a polygenetic determination for the dark spotting on the skin, whose heritability ( $h^2$ ) could reach a value ranging from  $h^2 = 0.16$  (Diaz *et al.* 2011) to  $h^2 = 0.45$  (Kause *et al.* 2003). In addition, the action of environmental factors on the spotting level in rainbow trout would also occur based on the evidence documented in other salmonids. Particularly, in the brown trout, where it has been demonstrated that the variance of the number of dark spots below the lateral line could be subjected to a significant environmental effect (Blanc *et al.* 1982), and in graylings, whose spotting level in the flank is positively associated with particular environmental features of the river, such as water velocity, water depth and water transparency (Penteriani *et al.* 2015). Other studies even support the effect of behavioural factors, given that in rainbow trout and Atlantic salmon the variation in spots number is related to the stress response of individuals (Kittilsen *et al.* 2009), being this capacity, higher in spotted fish than in non-spotted fish.

In females of the year 2007, we found a weak positive association between the number of dark spots below the lateral line and total length. This pattern is discordant with previous studies since, in rainbow trout, a clear relationship among these variables has been described for specimens above a certain size ( $> 30$  cm) (Islam *et al.* 1973). Our finding also disagrees with reports from other salmonid fishes, such as the brown trout, since total length in this species is significantly associated with the number of dark spots located below the lateral line (Aparicio *et al.* 2005), with those distributed in the ventral zone (Blanc *et al.* 1982), and with the total number of red spots on the body (Kocabas *et al.* 2011). In contrast, the males analyzed in this study, especially those of the year 2007, exhibited a strong inverse relationship between both parameters, *i.e.*, larger specimens tend to have a lower number of dark spots below the lateral



line than small ones. It is possible that this association may be related to the different development stages or ages of males analyzed if we consider that the spotting level decrease across the development. However, the available evidence in the rainbow trout indicates that on the contrary, this interpretation would not be consistent given that the spotting level of this species increases steadily across the development, such as have been observed at juvenile stage (Colihueque 2011). Therefore, it is likely that other factors could be involved in the origin of this pattern, being environmental factors an interesting hypothesis to be considered in the light of the evidence obtained in other salmonids. For example, in natural populations of graylings, Penteriani *et al.* (2015) have supported the interaction of the spotting level on flank with different environmental features of the river where they inhabit, such as water velocity, water depth and water transparency. Indeed, individuals with high spottiness level exhibit a positive and significant association to fast waters or with greater depths. Interestingly, these interactions also reveal that the spotting level may constitute a status signal related to the spatial arrangement of individuals along the river bed. Although further analyses on this issue are required to clarify the possible effects of environmental factors on the spotting level in naturalized populations of rainbow trout, in our case it should be noted that specimen analyzed were collected at spawning season from the small inlet streams of Calafquén Lake during their migration period. As it has been observed in this species (Knapp and Vredenburg 1996), the spawning behaviour is a complex process that involves the interaction of spawning females with particular characteristics of the river to construct their redds, such as water velocity, water depth, and substrate size. Moreover, in this process the interaction of females with males is also important for fertilization success, especially, if we keep in mind that in natural conditions ripe males are 3-9 times more abundant than ripe females (Knapp and Vredenburg 1996). Thus, it is possible that the spotting variation of males that is negatively associated with size may constitute some class of signal to address the interaction by spawning females.

The relationship between skin color and reproductive parameters in rainbow trout has received little attention. In vertebrates, including fishes, this approximation has been analyzed in the context of the effect of female ornamentation on offspring quality, and therefore, as a factor affecting fitness (reviewed by Nordeide *et al.* 2013). These studies indicate that different vertebrate ornamentation attributes (*e.g.*, plumage coloration, size of black feather spots, skin color and body color) are related positively or negatively at different levels; for example, with the survival and body mass of the offspring and with the size, mass and color of eggs. In particular, the effects of spotting level on fitness were well documented in *Rana pipiens* several years ago (Merrel 1972). It has also been observed that a particular female ornamentation may affect the female's own reproductive parameters, such as spawning time and fecundity (Roulin *et al.* 2001, Janhunen *et al.* 2011). In our case, results indicating that the existence of some reproductive parameters in female rainbow trout broodstocks, particularly egg diameter and spawning time, were significantly associated with the number of dark spots below the lateral line, suggest that this skin color attribute may be linked with female fitness. Thus, the spotting level could be interpreted as an indicator that reflects the reproductive quality of females, especially if we take into account that egg diameter (Brooks *et al.* 1997) and spawning time (Siitonen and Gall 1989, Quinn *et al.* 2002) are important traits for salmonid reproduction. In addition, since our study analyzed a naturalized population of rainbow trout, it is possible that ecological factors may be involved in the origin of this relationship. This possibility is not unlikely, in view of ecological studies on different fishes which indicate that greater reproduction success in females under natural conditions appears to depend on egg size, since larger eggs provide survival and growth advantages to the offspring during their first few days of life (Brooks *et al.* 1997). In addition, our findings on the association between spottiness and spawning time, agree with other previous studies that reveal the existence of this relationship in cultured populations of rainbow trout (Islam *et al.* 1973). They would also concur with data available on other vertebrates, such as the barn owl, where this association occurs in relation to the size of dark spots (Roulin *et al.* 2001). However, in contrast to Islam *et al.* (1973), we observed a positive relationship between the numbers of dark spots below the lateral line and spawning time, *i.e.*, females with higher numbers of dark spots tend to spawn later in the reproductive season than females with lower numbers of spots. Although, based on the present data, it is difficult to clarify the origin of this discordance between both data sets, it is possible that strain differences, management conditions, selection or genetic factors may explain, in part, these results. This is not unlikely, given that Islam *et al.* (1973) studied cultured strains in Japan, which that are usually subject to intense management in fish farms and, in contrast to a free-living population, are reared under controlled environmental conditions. These conditions are very different to those experienced by the naturalized populations of rainbow trout studied in this work, given that they inhabit a lake in southern Chile (Calafquén Lake), with particular limnic conditions related to special water characteristics (Campos 1984, Arismendi *et al.* 2011). In the case of selection and genetic factors, their effect on spawning time and spottiness would be expected to produce considerable variation among strains. This is possible given that, in rainbow trout, spawning time (Siitonen and Gall 1989, Su *et al.* 1999) and spotting level (Kause *et al.* 2003)

characters have a significant genetic determination, and therefore, may respond to selection pressure, which would alter their distribution in populations. In fact, Kauser *et al.* (2003) have demonstrated that through artificial selection of the spottiness level of a cultured rainbow trout strain, it is possible to respond rapidly to selection pressure after a few generations.

Further studies on spotting variation in other naturalized populations of rainbow trout from Chile will be important to support the relationship of this parameter with biometric and reproductive parameters reported in this work. The analysis of the spotting variation in these populations, for example, according to the habitat characteristics, it will also be useful to add more data to clarify this issue.

## CONCLUSION

No significant differences were observed in the mean number of dark spots below the lateral line between males and females in both reproductive seasons. This result suggests that spottiness below the lateral line is not sex-specific. Stepwise multiple regression analyses revealed that the body weight of males from year 2007 has a significant negative influence on the number of dark spots below the lateral line, while the reproductive variables egg diameter and spawning time of females from years 2007 and 2012, respectively, also have a relevant positive influence on this variable response. Overall, these results suggest that some biometric and reproductive variables may influence the skin spot variation of rainbow trout broodstocks living in natural environments.

## ETHICS APPROVAL AND CONSENT TO PARTICIPATE

Not applicable.

## HUMAN AND ANIMAL RIGHTS

The transitory capture of the wild broodstocks of rainbow trout from Calafquén Lake, were authorized by the Chilean Undersecretary of Fisheries and Aquaculture (permit #2750-20-09-07). During the period of captivity, their reproductive management and subsequent release to the lake was carried out in accordance with the recommendations of the Guidelines for the Use of Fishes in Research (<http://fisheries.org/guide-for-the-use-of-fishes-in-research>).

## CONSENT FOR PUBLICATION

Not applicable.

## CONFLICT OF INTEREST

The authors declare no conflict of interest, financial or otherwise.

## ACKNOWLEDGEMENTS

The suggestions and comments of all those who helped to improve the final version of this manuscript, are gratefully acknowledged. We are also indebted to Chiguaico fish farm for the hatchery facilities and Lican Ray Fish and Game Club for its assistance in the field work during collection of fish. This study was partially financed by Subsecretaría de Pesca y Acuicultura, Ministerio de Economía, Fomento y Turismo, Gobierno de Chile, Project 2012-34-FAP-5. This work is dedicated to the memory of Alejandro Koffmann O'Reilly, an outstanding promoter of the rainbow trout restocking program of Lake Calafquén.

## REFERENCES

- Ade, R (1989) *Trout and salmon handbook*. Facts On File, Inc., New York.
- Aparicio, E, García-Berthou, E, Araguas, RM, Martínez, P & García-Marín, JL (2005) Body pigmentation pattern to assess introgression by hatchery stocks in native *Salmo trutta* from Mediterranean streams. *J Fish Biol*, 67, 931-49. [<http://dx.doi.org/10.1111/j.0022-1112.2005.00794.x>]
- Arismendi, I, Sanzana, J & Soto, D (2011) Seasonal age distributions and maturity stage in a naturalized rainbow trout (*Oncorhynchus mykiss* Walbaum) population in southern Chile reveal an ad-fluvial life history. *Annales de Limnologie - International. J Limnol*, 47, 133-40. [<http://dx.doi.org/10.1051/limn/2011012>]
- Billard, R (1992) Reproduction in rainbow trout: sex differentiation, dynamics of gametogenesis, biology and preservation of gametes. *Aquaculture*, 100, 263-98.

[[http://dx.doi.org/10.1016/0044-8486\(92\)90385-X](http://dx.doi.org/10.1016/0044-8486(92)90385-X)]

Blanc, J, Poisson, H & Vibert, R (1982) Variabilité génétique de la ponctuation noire sur la truitelle Fario (*Salmo trutta* L.). *Ann Genet Sel Anim*, 14(2), 225-36.

[<http://dx.doi.org/10.1186/1297-9686-14-2-225>] [PMID: 22896233]

Brooks, S, Tyler, CR & Sumpter, JP (1997) Egg quality in fish: what makes a good egg? *Rev Fish Biol Fish*, 7, 387-416.

[<http://dx.doi.org/10.1023/A:1018400130692>]

Campos, H (1984) Limnological study of Araucanian lakes (Chile). *Verhandlungen Internationale Vereinigung Limnologie*, 22, 1319-27.

Cohen, J (1988) *Statistical power analysis for the behavioral sciences*. Lawrence Erlbaum Associates, New York, USA.

Colihueque, N (2010) Genetics of salmonid skin pigmentation: clues and prospects for improving the external appearance of farmed salmonids. *Rev Fish Biol Fish*, 20, 71-86.

[<http://dx.doi.org/10.1007/s11160-009-9121-6>]

Colihueque, N, Parraguez, M, Estay, FJ & Diaz, NF (2011) Skin color characterization in rainbow trout by use of computer-based image analysis. *N Am J Aquaculture*, 73, 249-58.

[<http://dx.doi.org/10.1080/15222055.2011.581578>]

Colihueque, N (2014) Analysis of the coloration and spottiness of Blue Back rainbow trout at a juvenile stage. *J Appl Anim Res*, 42, 474-80.

[<http://dx.doi.org/10.1080/09712119.2014.883317>]

Diaz, NF, Estay, F, Araneda, C & Colihueque, N (2011) Heritability of Blue Back skin colour and correlations with growth in rainbow trout, *Oncorhynchus mykiss*. *Proceedings of the Australian Society for Fish Biology 2011 Conference* Australian Society for Fish Biology, Townsville, Australia.

Donnelly, WA & Dill, LM (1984) Evidence for crypsis in coho salmon, *Oncorhynchus kisutch* (Walbaum), parr: Substrate colour preference and achromatic reflectance. *J Fish Biol*, 25, 183-95.

[<http://dx.doi.org/10.1111/j.1095-8649.1984.tb04865.x>]

Donnelly, W & Whoriskey, F (1993) Transplantation of Atlantic salmon (*Salmo salar*) and crypsis breakdown. *Can Spec Publ Fish Aquat Sci*, 118, 25-34.

Endler, JA (1980) Natural selection on color patterns in *Poecilia reticulata*. *Evolution*, 34(1), 76-91.

[<http://dx.doi.org/10.1111/j.1558-5646.1980.tb04790.x>] [PMID: 28563214]

Evans, JP, Bisazza, A & Pilastro, A (2004) Female mating preferences for colourful males in a population of guppies subject to high predation. *J Fish Biol*, 65, 1154-9.

[<http://dx.doi.org/10.1111/j.0022-1112.2004.00502.x>]

Ghani, IM & Ahmad, S (2010) Stepwise multiple regression method to forecast fish landing. *Procedia Soc Behav Sci*, 8, 549-54.

[<http://dx.doi.org/10.1016/j.sbspro.2010.12.076>]

Golusda, P (1927) Aclimatación y cultivo de especies salmonídeas en Chile. *Boletín de la Sociedad de Biología de Concepción-Chile*, 1, 80-100.

Houde, AE & Endler, JA (1990) Correlated evolution of female mating preferences and male color patterns in the guppy *Poecilia reticulata*. *Science*, 248(4961), 1405-8.

[<http://dx.doi.org/10.1126/science.248.4961.1405>] [PMID: 17747527]

Islam, MA, Nose, Y & Yasuda, F (1973) Number and distribution pattern of the black spots on body surface of rainbow trout. *Nippon Suisan Gakkaishi*, 39, 727-39.

[<http://dx.doi.org/10.2331/suisan.39.727>]

Janhunen, M, Peuhkuri, N, Primmer, CR, Kolari, I & Piironen, J (2010) Does breeding ornamentation signal genetic quality in Arctic charr, *Salvelinus alpinus*? *Evol Biol*, 38, 68-78.

[<http://dx.doi.org/10.1007/s11692-010-9100-9>]

Kause, A, Ritola, O, Paananen, T, Eskelinen, U & Mäntysaari, E (2003) Big and beautiful? Quantitative genetic parameters for appearance of large rainbow trout. *J Fish Biol*, 62, 610-22.

[<http://dx.doi.org/10.1046/j.1095-8649.2003.00051.x>]

Kittilsen, S, Schjolden, J, Beitnes-Johansen, I, Shaw, JC, Pottinger, TG, Sørensen, C, Braastad, BO, Bakken, M & Overli, O (2009) Melanin-based skin spots reflect stress responsiveness in salmonid fish. *Horm Behav*, 56(3), 292-8.

[<http://dx.doi.org/10.1016/j.yhbeh.2009.06.006>] [PMID: 19539629]

- Knapp, RA & Vredenburg, VT (1996) Spawning by California Golden trout: characteristics of spawning fish, seasonal and daily timing, redd characteristics, and microhabitat preferences. *Trans Am Fish Soc*, 125, 519-31.  
[[http://dx.doi.org/10.1577/1548-8659\(1996\)125<0519:SBCGTC>2.3.CO;2](http://dx.doi.org/10.1577/1548-8659(1996)125<0519:SBCGTC>2.3.CO;2)]
- Kodric-Brown, A (1985) Female preference and sexual selection for male coloration in the guppy (*Poecilia reticulata*). *Behav Ecol Sociobiol*, 17, 199-205.  
[<http://dx.doi.org/10.1007/BF00300137>]
- Kocabas, M, Kayim, M, Can, E, Ates, M, Kutluyer, F & Aksu, Ö (2011) Spotting pattern features in the brown trout (*Salmo trutta macrostigma*, T., 1954) population. *Sci Res Essays*, 6, 5021-4.
- Merrell, DJ (1972) Laboratory studies bearing on pigment pattern polymorphisms in wild populations of *Rana pipiens*. *Genetics*, 70(1), 141-61.  
[PMID: 4536870]
- Nichols, KM, Edo, AF, Wheeler, PA & Thorgaard, GH (2008) The genetic basis of smoltification-related traits in *Oncorhynchus mykiss*. *Genetics*, 179(3), 1559-75.  
[<http://dx.doi.org/10.1534/genetics.107.084251>] [PMID: 18562654]
- Nordeide, JT, Kekäläinen, J, Janhunen, M & Kortet, R (2013) Female ornaments revisited - are they correlated with offspring quality? *J Anim Ecol*, 82(1), 26-38.  
[<http://dx.doi.org/10.1111/1365-2656.12021>] [PMID: 23194443]
- Penteriani, V, Delgado, MM, Clavero, M & Ivanc, M (2015) Spottiness of European graylings (*Actinopterygii*, *Salmonidae*) correlates with environmental features and could signal the status of individuals. *Italian Journal of Zoology*, 82, 202-11.
- Qadri, SU (1959) Some morphological differences between the subspecies of cutthroat trout, *Salmo clarki clarki* and *Salmo clarki lewisi*, in British Columbia. *J Fish Res Board Can*, 16, 903-22.  
[<http://dx.doi.org/10.1139/f59-064>]
- Quinn, TP, Peterson, JA, Gallucci, VF, Hershberger, WK & Brannon, EL (2002) Artificial selection and environmental change: Countervailing factors affecting the timing of spawning by Coho and Chinook salmon. *Trans Am Fish Soc*, 131, 591-8.  
[[http://dx.doi.org/10.1577/1548-8659\(2002\)131<0591:ASAEC>2.0.CO;2](http://dx.doi.org/10.1577/1548-8659(2002)131<0591:ASAEC>2.0.CO;2)]
- Ramstad, KM, Woody, CA & Allendorf, FW (2010) Recent local adaptation of sockeye salmon to glacial spawning habitats. *Evol Ecol*, 24, 391-411.  
[<http://dx.doi.org/10.1007/s10682-009-9313-5>]
- Roulin, A, Dijkstra, C, Riols, C & Ducrest, A (2001) Female- and male-specific signals of quality in the barn owl. *J Evol Biol*, 14, 255-66.  
[<http://dx.doi.org/10.1046/j.1420-9101.2001.00274.x>]
- Sathyan, R & Couldridge, VC (2012) Female preference for blue in Japan blue guppies (*Poecilia reticulata*). *Environ Biol Fishes*, 96, 953-9.  
[<http://dx.doi.org/10.1007/s10641-012-0091-5>]
- Siitonen, L & Gall, GA (1989) Response to selection for early spawn date in rainbow trout, *Salmo gairdneri*. *Aquaculture*, 78, 153-61.  
[[http://dx.doi.org/10.1016/0044-8486\(89\)90029-X](http://dx.doi.org/10.1016/0044-8486(89)90029-X)]
- Sokal, RR & Rohlf, FJ (1995) *Biometry: the principles and practice of statistics in biological research*. WH Freeman and Company, New York, USA.
- Soto, D (2002) *Estudio del ciclo reproductivo de las principales especies objetivo de la pesca deportiva en la X Región Informe Final Proyecto FIP 2000-24*. Subsecretaría de Pesca y Acuicultura, Ministerio de Economía, Fomento y Turismo, Gobierno de Chile, Valparaíso, Chile.
- Soto, D, Arismendi, I & Gonzalez, J (2006) Southern Chile, trout and salmon country: Invasion patterns and threats for native species. *Rev Chil Hist Nat*, 79, 97-117.  
[<http://dx.doi.org/10.4067/S0716-078X2006000100009>]
- Su, G-S, Liljedahl, L-E & Gall, GA (1999) Estimates of phenotypic and genetic parameters for within-season date and age at spawning of female rainbow trout. *Aquaculture*, 171, 209-20.  
[[http://dx.doi.org/10.1016/S0044-8486\(98\)00494-3](http://dx.doi.org/10.1016/S0044-8486(98)00494-3)]
- Tack, E (1973) Züchtungsfragen in der Forellenzucht. *Oesterr Fisch*, 26, 77-84.
- Wedekind, C, Jacob, A, Evanno, G, Nusslé, S & Müller, R (2008) Viability of brown trout embryos positively linked to melanin-based but negatively to carotenoid-based colours of their fathers. *Proc Biol Sci*, 275(1644), 1737-44.  
[<http://dx.doi.org/10.1098/rspb.2008.0072>] [PMID: 18445560]

Westfall, PH & Young, SS (1993) *Resampling-based multiple testing: Examples and methods for p-value adjustment*. John Wiley and Sons, New York.

Westley, PA, Stanley, R & Fleming, IA (2013) Experimental tests for heritable morphological color plasticity in non-native brown trout (*Salmo trutta*) populations. *PLoS One*, 8(11), e80401. [<http://dx.doi.org/10.1371/journal.pone.0080401>] [PMID: 24260385]

Wetzlar, HJ (1979) *Beitrage sur biologie und bewirtschaftung von forellen (Salmo gairdneri und S trutta) in Chile* PhD Thesis, Albert-Ludwig Universitat, Contanza, Germany.

---

© 2018 Colihueque *et al.*

This is an open access article distributed under the terms of the Creative Commons Attribution 4.0 International Public License (CC-BY 4.0), a copy of which is available at: <https://creativecommons.org/licenses/by/4.0/legalcode>. This license permits unrestricted use, distribution, and reproduction in any medium, provided the original author and source are credited.